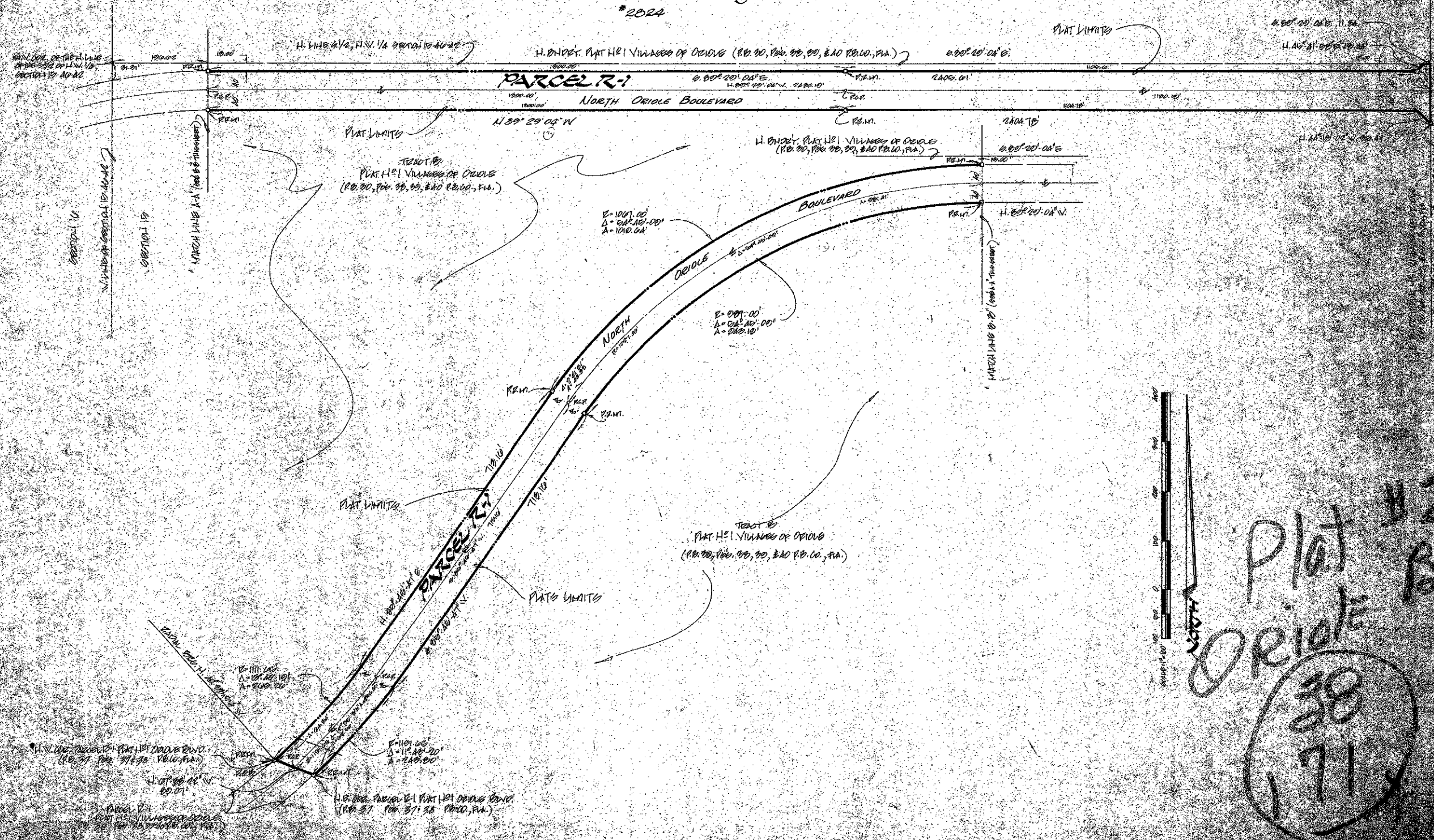


PLAT NO. 2 ORIOLE BOULEVARD

PART of A
P.U.D.

BEING A REPLAT OF A PORTION OF TRACTS B & C
PLAT NO. 1 VILLAGES OF ORIOLE (P.D. 30, P.D. 33, 35, 36, 37, 38, 39, 40)
SECTIONS 15, 31, TOWNSHIP 46 SOUTH, RANGE 42 EAST
PALM BEACH COUNTY, FLORIDA

Prepared by:
BRONNIE FARINA, INC.
Engineers - Planners - Surveyors
Coral Springs, Florida
K. N. Kirk,
Professional Land Surveyor
2024



Plat #2
ORIOLE Blvd
39
38
171